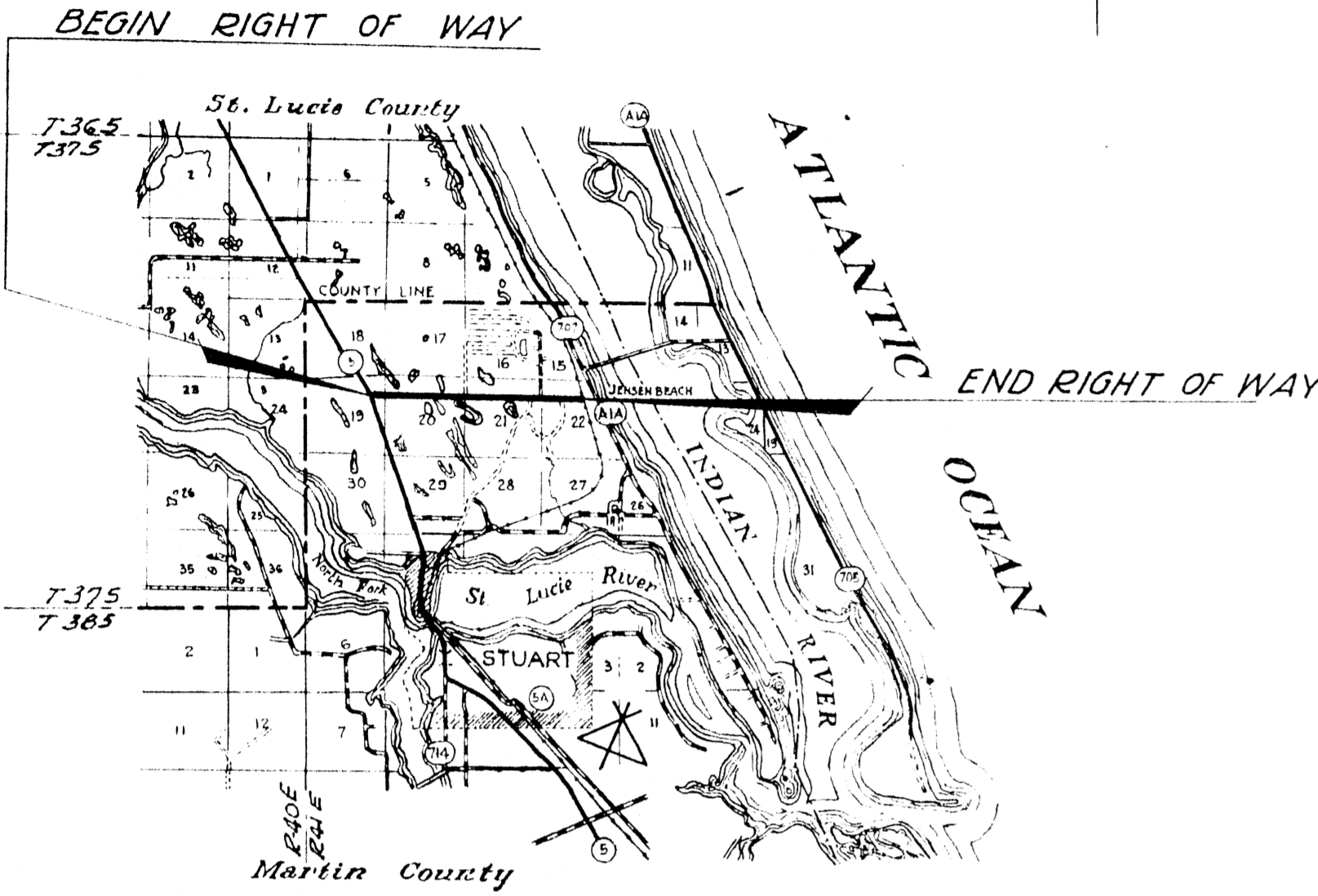
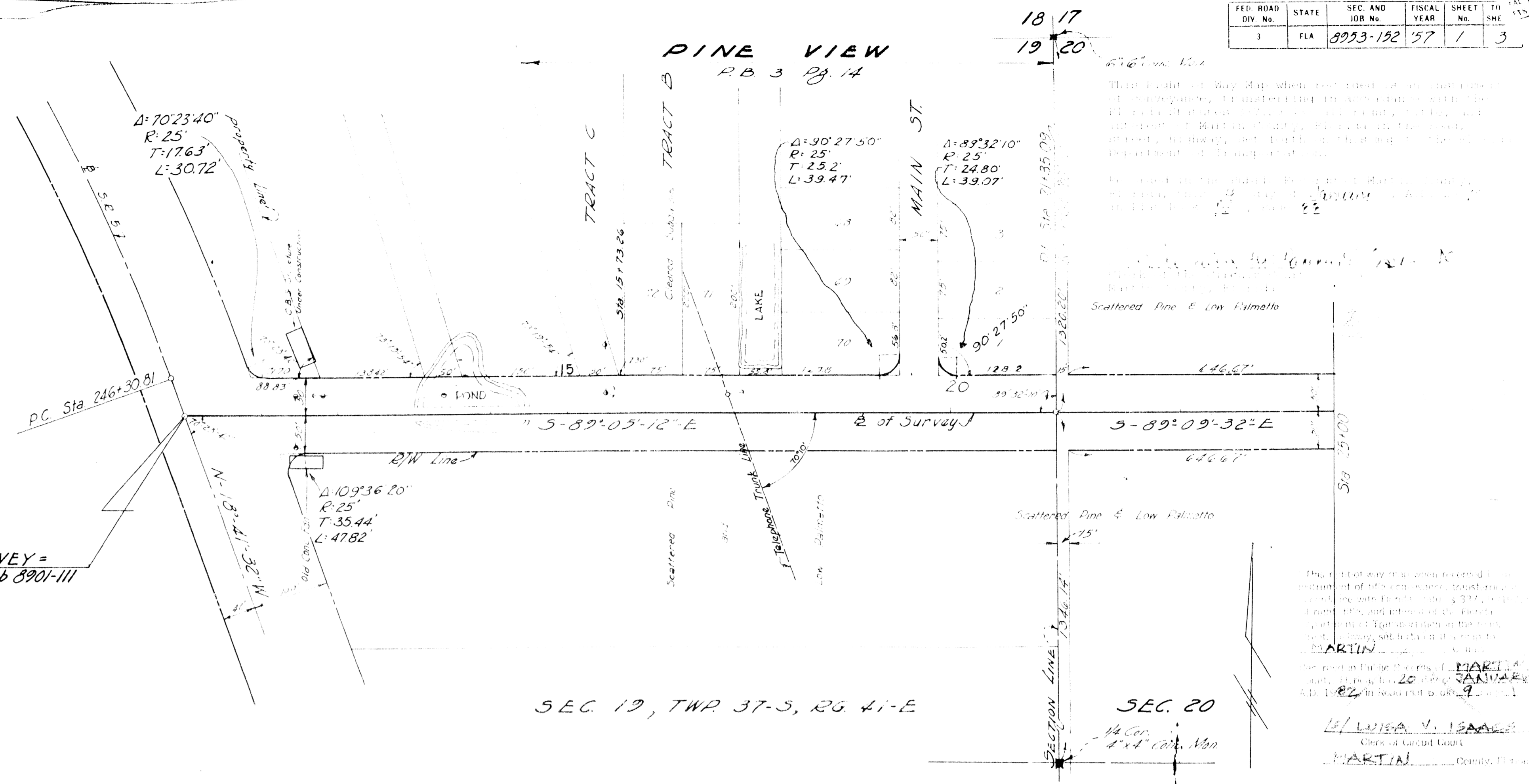


LOCATION MAP
Scale 1" = 2 miles.



S.R. 5 CURVE DATA
 $\Delta = 12.31-50$ LT.
 $D = 2-00-00$
 $R = 2864.93'$
 $T = 314.53'$
 $L = 626.53'$

STA. 10+00 BEGINNING OF SURVEY =
STA. 245+73.18 S.R. 5 State Job 8901-111



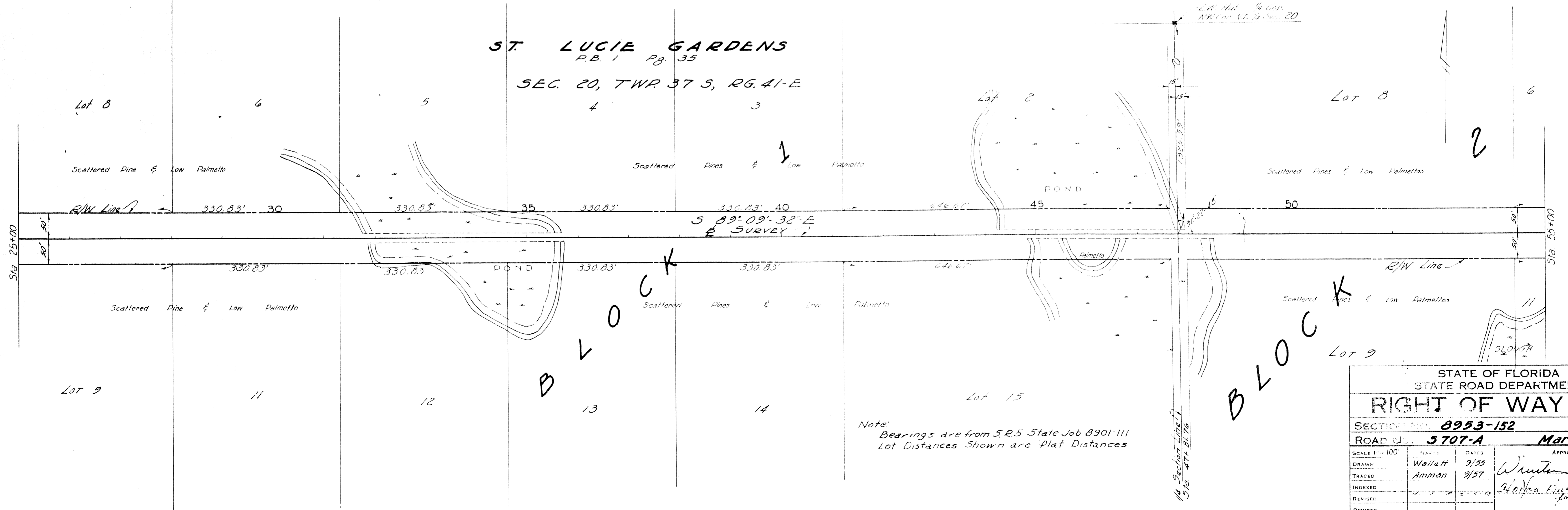
SEC. 19, TWP. 37-S, RG. 41-E

SEC. 20

1/11/82
 W. L. WEAVER
 Clerk of Circuit Court
 MARTIN COUNTY, FLORIDA

ST. LUCIE GARDENS
 P.B. 1 P. 35

SEC. 20, TWP. 37 S, RG. 41-E



Note:
 Bearings are from S.R. 5 State Job 8901-111
 Lot Distances Shown are Plat Distances

STATE OF FLORIDA STATE ROAD DEPARTMENT			
RIGHT OF WAY MAP			
SECTION No. 8953-152			
ROAD No. 5707-A Martin County			
SCALE 1" = 100'	DATE	APPROVED BY	
DRAWN	9/55	<i>Walter C. Carter</i> DIVISION ENGINEER	
TRACED	9/57		
INDEXED		<i>Walter C. Carter</i> STATE HIGHWAY ENGINEER	
REVISED			